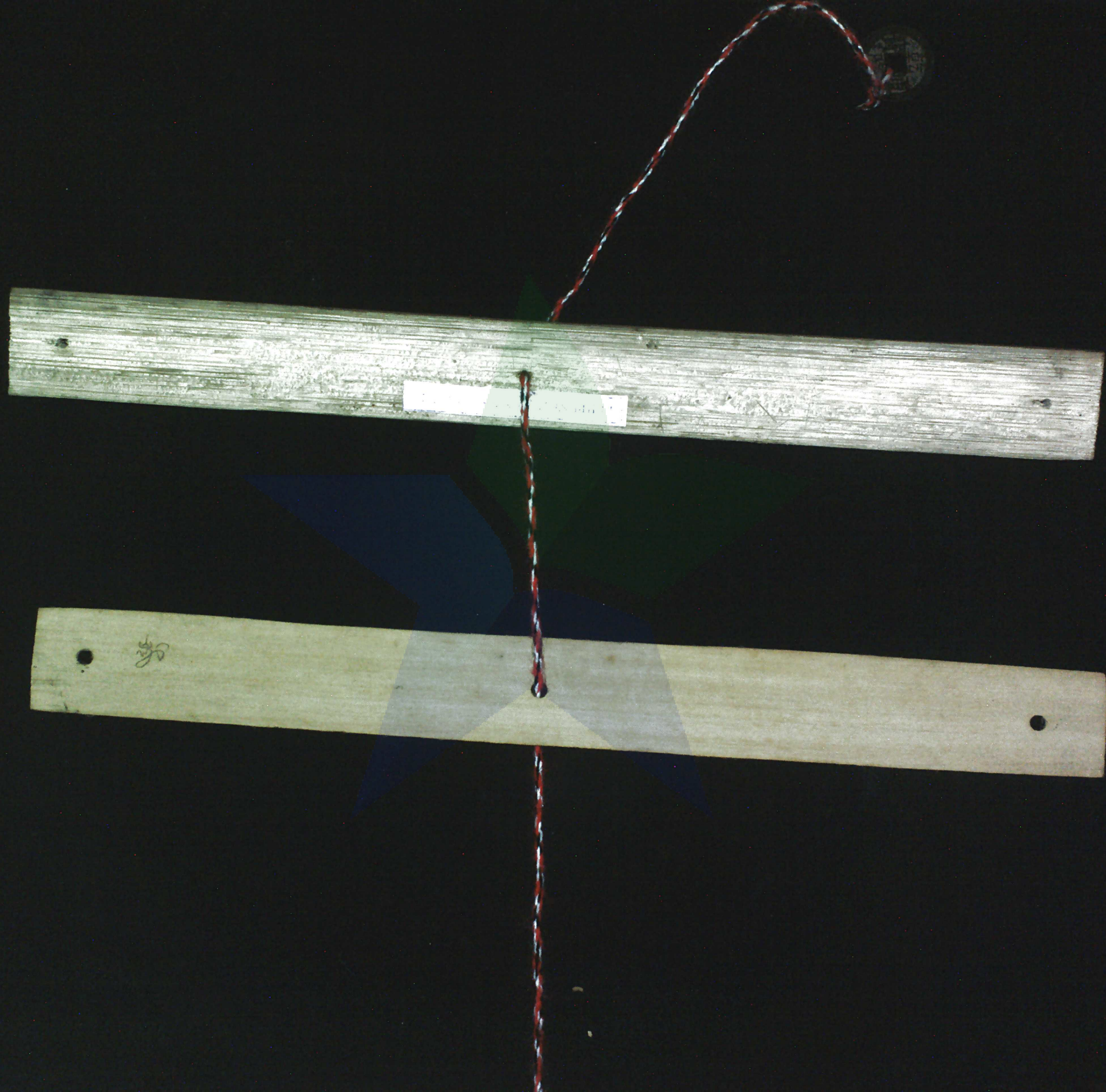


Geguritan Angastia

PERPUSTAKAAN NASIONAL RI

Tanggal : 23-09-2019
Item ID : 00002461097
No. Induk : 201901202032972
BIB-ID : 0010-0919002606
Beli/Harian : Erwin Dian Resyidi

45443 No : 151
Geguritan
Isi : 25 NB : 2483



Handwritten text in an ancient script, likely Pāli, on a palm leaf fragment. The text is arranged in approximately four lines.

Handwritten text in an ancient script, likely Pāli, on a palm leaf fragment. The text is arranged in approximately four lines.

Handwritten text in an ancient script, likely Pāli, on a palm leaf fragment. The text is arranged in approximately four lines.

Handwritten text in an ancient script, likely Pāli, on a palm leaf fragment. The text is arranged in approximately four lines.

Handwritten text in an ancient script, likely Pāli, on a palm leaf fragment. The text is arranged in approximately four lines.

Handwritten text in an ancient script, likely Pāli, on a palm leaf fragment. The text is arranged in approximately four lines.

Handwritten text on a palm leaf strip, likely a continuation from a previous page. The script is in an ancient South Asian language, possibly Tamil or Grantha. The text is arranged in several lines across the length of the leaf.

8
Handwritten text on a palm leaf strip, starting with the number '8' in the left margin. The script is consistent with the other strips, showing a continuous flow of text.

Handwritten text on a palm leaf strip, continuing the text from the previous strips. The script is clearly visible against the dark background.

Handwritten text on a palm leaf strip, likely a page from an ancient manuscript. The text is arranged in two columns, with a central hole for binding. The script is an ancient form of a South Asian language, possibly Pali or Sanskrit.

Handwritten text on a palm leaf strip, likely a page from an ancient manuscript. The text is arranged in two columns, with a central hole for binding. The script is an ancient form of a South Asian language, possibly Pali or Sanskrit.

Handwritten text on a palm leaf strip, likely a page from an ancient manuscript. The text is arranged in two columns, with a central hole for binding. The script is an ancient form of a South Asian language, possibly Pali or Sanskrit.

Handwritten text on a long, narrow strip of paper, likely a manuscript or record. The text is written in a cursive script, possibly a South Asian language like Tamil or Telugu. The strip is held in place by a vertical red and white thread.

Handwritten text on a long, narrow strip of paper, likely a manuscript or record. The text is written in a cursive script, possibly a South Asian language like Tamil or Telugu. The strip is held in place by a vertical red and white thread.

Handwritten text on a long, narrow strip of paper, likely a manuscript or record. The text is written in a cursive script, possibly a South Asian language like Tamil or Telugu. The strip is held in place by a vertical red and white thread.

Handwritten text on a strip of paper, likely a fragment of a larger document. The text is written in a cursive script, possibly a form of Indic or Southeast Asian script. The strip is held in place by a vertical red and white thread.

Handwritten text on a strip of paper, continuing the script from the top strip. The text is arranged in two columns, with a small circular hole on the left side.

Handwritten text on a strip of paper, continuing the script from the middle strip. The text is arranged in two columns, with a small circular hole on the left side.

Handwritten text on a long, narrow strip of paper, likely a palm leaf manuscript. The text is written in a cursive script, possibly Tamil or a related South Asian language. It is divided into two columns by a vertical line.

Handwritten text on a long, narrow strip of paper, likely a palm leaf manuscript. The text is written in a cursive script, possibly Tamil or a related South Asian language. It is divided into two columns by a vertical line.

Handwritten text on a long, narrow strip of paper, likely a palm leaf manuscript. The text is written in a cursive script, possibly Tamil or a related South Asian language. It is divided into two columns by a vertical line.

Handwritten text on a palm leaf strip, likely containing a list or record. The script is an ancient South Asian script, possibly Grantha or Tamil. The text is arranged in two columns, with a central hole for binding. The characters are finely etched into the surface of the leaf.

Handwritten text on a palm leaf strip, continuing the list or record. The script is consistent with the top strip. The text is arranged in two columns, with a central hole for binding. The characters are finely etched into the surface of the leaf.

Handwritten text on a palm leaf strip, continuing the list or record. The script is consistent with the other strips. The text is arranged in two columns, with a central hole for binding. The characters are finely etched into the surface of the leaf.

Handwritten text on a long, narrow strip of paper, likely a fragment of a larger document. The text is written in a cursive script, possibly Indic or Southeast Asian, and is arranged in several lines across the length of the strip.

Handwritten text on a long, narrow strip of paper, likely a fragment of a larger document. The text is written in a cursive script, possibly Indic or Southeast Asian, and is arranged in several lines across the length of the strip.

Handwritten text on a long, narrow strip of paper, likely a fragment of a larger document. The text is written in a cursive script, possibly Indic or Southeast Asian, and is arranged in several lines across the length of the strip.

Handwritten text on the top strip, split into two columns by a central vertical line. The script is an ancient form of a South Asian language, possibly Tamil or Grantha. The left column contains approximately 10 lines of text, and the right column contains approximately 10 lines. There are small circular holes on either side of the strip, and a red and white thread is visible running vertically through the center.

Handwritten text on the middle strip, split into two columns by a central vertical line. The script is consistent with the top strip. The left column contains approximately 10 lines of text, and the right column contains approximately 10 lines. There are small circular holes on either side of the strip, and a red and white thread is visible running vertically through the center.

Handwritten text on the bottom strip, split into two columns by a central vertical line. The script is consistent with the other strips. The left column contains approximately 10 lines of text, and the right column contains approximately 10 lines. There are small circular holes on either side of the strip, and a red and white thread is visible running vertically through the center.

Handwritten text on a palm leaf strip, likely a continuation from a previous leaf. The script is an ancient South Asian form, possibly Grantha or Tamil.

Handwritten text on a palm leaf strip, continuing the script from the previous leaf.

Handwritten text on a palm leaf strip, featuring a circular hole on the left side for binding.

Handwritten text on a palm leaf strip, continuing the script from the previous leaf.

Handwritten text on a palm leaf strip, featuring a circular hole on the left side for binding.

Handwritten text on a palm leaf strip, continuing the script from the previous leaf.

Handwritten text in an ancient script, likely Pāli, on a palm leaf. The text is arranged in several lines across the width of the leaf. A circular hole is visible on the left side, used for binding.

Handwritten text in an ancient script, likely Pāli, on a palm leaf. The text is arranged in several lines across the width of the leaf. A circular hole is visible on the right side, used for binding.

Handwritten text in an ancient script, likely Pāli, on a palm leaf. The text is arranged in several lines across the width of the leaf. Two circular holes are visible on the left side, used for binding.

Handwritten text in an ancient script, likely Pāli, on a palm leaf. The text is arranged in several lines across the width of the leaf. Two circular holes are visible on the right side, used for binding.

Handwritten text in an ancient script, likely Pāli, on a palm leaf. The text is arranged in several lines across the width of the leaf. A circular hole is visible on the left side, used for binding.

Handwritten text in an ancient script, likely Pāli, on a palm leaf. The text is arranged in several lines across the width of the leaf. A circular hole is visible on the right side, used for binding.

Handwritten text in an ancient script, likely Tamil, on a palm leaf. The text is arranged in two columns, with a central hole for binding. The script is finely etched into the surface of the leaf.

Handwritten text in an ancient script, likely Tamil, on a palm leaf. The text is arranged in two columns, with a central hole for binding. The script is finely etched into the surface of the leaf.

Handwritten text in an ancient script, likely Tamil, on a palm leaf. The text is arranged in two columns, with a central hole for binding. The script is finely etched into the surface of the leaf.

Handwritten text on a palm leaf strip, likely a continuation from a previous page. The script is in an ancient South Asian language, possibly Tamil or Grantha. The text is arranged in two columns, with a small circular hole on the left side for binding.

Handwritten text on a palm leaf strip, continuing the narrative or list. The script is consistent with the previous strip. A small circular hole is visible on the left side, and a larger one on the right side.

Handwritten text on a palm leaf strip, the final strip in this sequence. The script is consistent with the previous strips. A small circular hole is visible on the left side, and a larger one on the right side.

Handwritten text on a palm leaf strip, likely a page from an ancient manuscript. The text is written in a cursive script, possibly Tamil or a related South Asian language. It is divided into two columns by a central vertical line.

Handwritten text on a palm leaf strip, continuing the manuscript. The text is written in a cursive script, possibly Tamil or a related South Asian language. It is divided into two columns by a central vertical line.

Handwritten text on a palm leaf strip, continuing the manuscript. The text is written in a cursive script, possibly Tamil or a related South Asian language. It is divided into two columns by a central vertical line.

Handwritten text on a palm leaf strip, likely a continuation from a previous page. The script is in an ancient South Asian language, possibly Tamil or Grantha. The text is arranged in two columns, with a small circular mark on the right side.

Handwritten text on a palm leaf strip, continuing the script. It features two circular marks, one on the left and one on the right, which may serve as markers or decorative elements. The text is written in a consistent, cursive style.

Handwritten text on a palm leaf strip, the final visible segment of the manuscript. It contains two circular marks, one on the left and one on the right, similar to the other strips. The script remains legible throughout.

Handwritten text on a palm leaf strip, likely a page from an ancient manuscript. The text is arranged in two columns, with a small circular mark on the left side. The script is an ancient form of a South Asian language, possibly Tamil or Grantha.

Handwritten text on a palm leaf strip, continuing the manuscript. The text is arranged in two columns, with a small circular mark on the left side. The script is an ancient form of a South Asian language, possibly Tamil or Grantha.

Handwritten text on a palm leaf strip, continuing the manuscript. The text is arranged in two columns, with a small circular mark on the left side. The script is an ancient form of a South Asian language, possibly Tamil or Grantha.

Handwritten text on a long, narrow strip of paper, likely a manuscript page. The text is written in a cursive script, possibly a form of Chinese or a related East Asian script. The strip is slightly curved and has a small hole on the right side.

Handwritten text on a long, narrow strip of paper, likely a manuscript page. The text is written in a cursive script, possibly a form of Chinese or a related East Asian script. The strip is slightly curved and has two small holes on the left side.

Handwritten text on a long, narrow strip of paper, likely a manuscript page. The text is written in a cursive script, possibly a form of Chinese or a related East Asian script. The strip is slightly curved and has two small holes on the left side.

Handwritten text on a palm leaf strip, likely a page from an ancient manuscript. The text is arranged in two columns, with a central binding hole. The script is an ancient form of a South Asian language, possibly Tamil or Grantha.

Handwritten text on a palm leaf strip, continuing the manuscript. The text is arranged in two columns, with a central binding hole. The script is an ancient form of a South Asian language, possibly Tamil or Grantha.

Handwritten text on a palm leaf strip, continuing the manuscript. The text is arranged in two columns, with a central binding hole. The script is an ancient form of a South Asian language, possibly Tamil or Grantha.

Handwritten text on a long, narrow strip of paper, likely a manuscript page. The text is written in a cursive script, possibly a form of Pahlavi or Old Persian. It is divided into two columns by a central vertical line.

Handwritten text on a long, narrow strip of paper, likely a manuscript page. The text is written in a cursive script, possibly a form of Pahlavi or Old Persian. It is divided into two columns by a central vertical line.

Handwritten text on a long, narrow strip of paper, likely a manuscript page. The text is written in a cursive script, possibly a form of Pahlavi or Old Persian. It is divided into two columns by a central vertical line.

Handwritten Burmese script on a long, narrow strip of paper, likely a palm leaf or bark. The text is arranged in two columns, with a central hole for binding. The script is finely inscribed and appears to be a form of classical Burmese.

Handwritten Burmese script on a long, narrow strip of paper, similar to the top strip. It features two columns of text with a central binding hole. On the left side, there are three small, handwritten numbers: ၇၇, ၇၈, and ၇၉, which likely serve as a list or index.

Handwritten Burmese script on a long, narrow strip of paper, continuing the sequence. It contains two columns of text with a central hole. The script is consistent with the other strips, suggesting a continuous text or a related document.

Handwritten text on a long, narrow strip of paper, likely a manuscript page. The text is written in a cursive script, possibly a form of Thai or Burmese. The strip is held in place by a vertical red and white string.

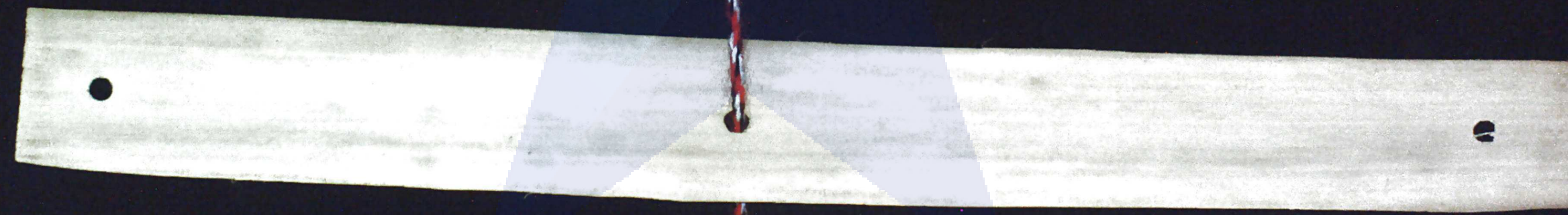
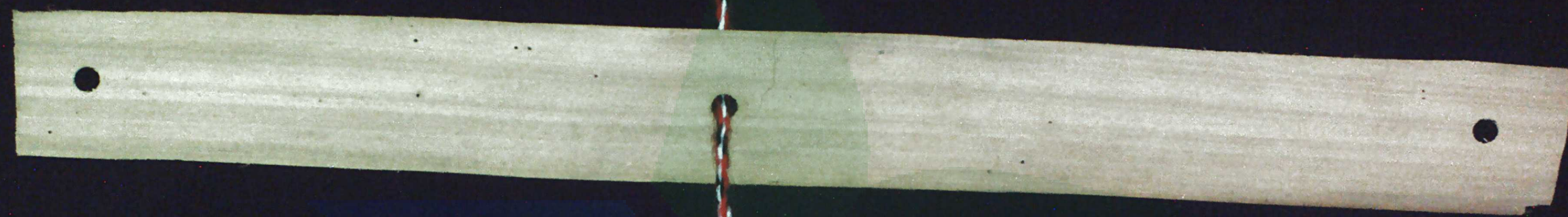
Handwritten text on a long, narrow strip of paper, likely a manuscript page. The text is written in a cursive script, possibly a form of Thai or Burmese. The strip is held in place by a vertical red and white string.

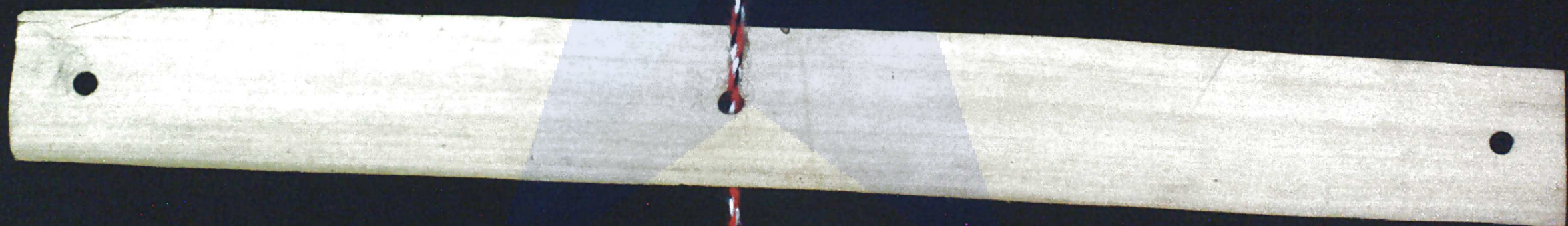
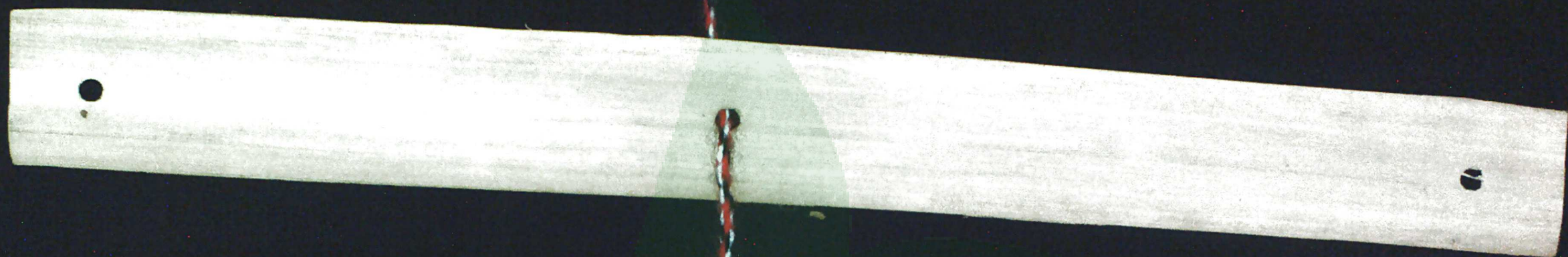
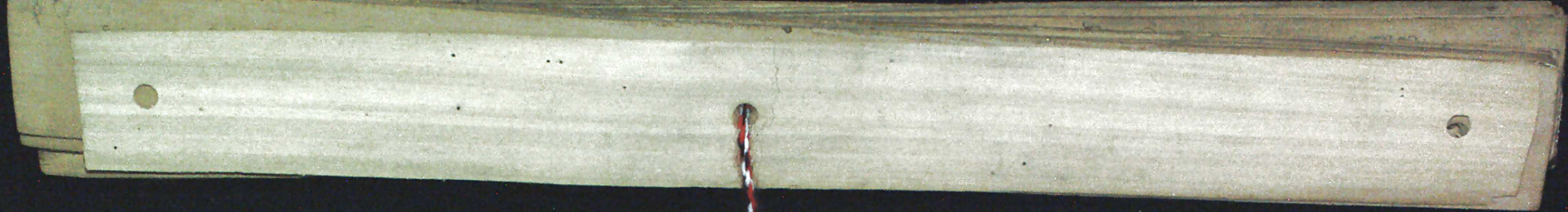
Handwritten text on a long, narrow strip of paper, likely a manuscript page. The text is written in a cursive script, possibly a form of Thai or Burmese. The strip is held in place by a vertical red and white string.

98
Handwritten text in Devanagari script, likely a manuscript page. The text is arranged in several lines across the width of the strip. A small circular mark is visible on the left side.

99
A blank, aged, light-colored strip of paper or parchment with three circular holes punched along its length.

100
A blank, aged, light-colored strip of paper or parchment with three circular holes punched along its length. A faint blue rectangular mark is visible near the center hole.









PERPUSTAKAAN NASIONAL RI
NB
2483

08